

ESA 10TH CONFERENCE GENEVA 2011

N e w s l e t t e r

Scientific provisional
pre-programme and
confirmed keynotes

Page 2 – 3

RN/RS confirmed for ESA
10th Conference

33 research networks and
21 research streams!

Page 4

Events around the
conference / what to do
in Geneva?

Page 5

General information

Registration
Contacts

Page 6

SECOND CONFERENCE ANNOUNCEMENT: SOCIAL RELATIONS IN TURBULENT TIMES

The preparation of the 10th ESA conference is well underway. In this second announcement, we will inform you about the abstract submission process, the scientific pre-programme, the keynotes and the events around the conference. You will also find general information on the last page of this newsletter.

This year in September, Geneva will be the European Capital of sociology, thanks to the 11th ESA conference that will take place in the main buildings of the University.

The **abstract submission** is currently open: Not less than 33 Research networks and 21 research streams have submitted their call for papers and are now open for abstracts! They are all available on our website under: www.esa10thconference.com/submission.php. Please

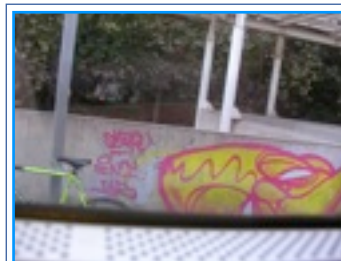
note that some RN/RS will accept submissions and presentations in French. To date, we have

received about 700 abstract proposals. We're looking forward to receiving more and to welcome you at Uni-Mail in Geneva. The whole local organizing committee is enjoying a challenging period of preparation – the process is going well, keynotes are almost all found, but more than all we hope that these four Congress days will be fruitful and enjoyable for everyone!

Sandro Cattacin & Patricia Naegeli, LOC, Geneva



University of Geneva, bikes in front of Uni Mail, photographie: Jacques ERARD, 2003



Keydates

Please note the following keydates – we kindly ask you to meet these deadlines.

25th of February: deadline for abstract submission

1st of March: Opening of Registrations

6th of April: Decisions on acceptance of abstracts by the coordinators relayed to paper givers
20th of April: Pre-programme of each paper session has to be sent by the coordinators to the LOC in Geneva.

3rd of May: Closing of the early-bird registrations

15th of June: Final date for registration/payment by paper givers

30th of June: Final programme of each session sent by coordinators to the LOC in Geneva.

Social Relations in Turbulent Times

Geneva, 7-10 Sept. 2011

ESA 10th Conference

SCIENTIFIC PROVISIONAL PRE-PROGRAMME

This programme is of course subject to change, and we have to wait for the pre-programme sent by each RN/RS coordinator to know approximately how many sessions we will have. We currently expect to have approximately 70 to 80 parallel sessions plus around 20 – 25 semi-plenaries and other special sessions! Once more, a real challenge for the LOC in Geneva! Please see the overview of the pre-programme.

Wednesday 7th of September

Registration opens at 9.00

9.00 – 12.30	ESA Executive Committee Meeting
13.00 – 14.30	RN Representatives Meeting
14.30 – 15.30	National Associations meeting
16.00 – 18.30	OPENING CEREMONY AND PLENARY: Social Europe under Pressure (Victoria Hall)
18.30 – 19.30	Welcome Reception / PhD Reception (Victoria Hall)

CONFIRMED KEYNOTES

Wolfgang Streeck, Colin Crouch, Frank Dobbin, Jens Beckert, Brian Heap, Richard Münch, Richard Hyman, Julia Evetts, Catherine Delcroix, Roswitha Breckner, Luigi Pellizoni, Clegg Stewart, Donald MacKenzie, Diane Perrons, Ken Roberts, Carmen Leccardi, Tia DeNora, Hubert Knoblauch, Klaus Eder, Kate Nash, Alan Warde, Christian Fuchs and Silvia Walby.

Thursday 8th of September

Registration opens at 8.00

9.00 – 10.30	RN/RS Session	
11.00 – 12.30	Semi-plenaries 1.1 – 1.6	Workshop Education
12.30 – 13.30	Lunch / Meet the author session	
13.30 – 15.00	RN/RS Session	
15.30 – 17.00	RN/RS Session	
17.00 – 18.00	RN/RS Business Meeting	
18.30 – 20.30	SPECIAL PLENARY: Life Trajectories in Turbulent Times	Regional Associations: Sociology in Turbulent Times



Social Relations in Turbulent Times

Geneva, 7-10 Sept. 2011

ESA 10th Conference

Friday 9th of September

Registration opens at 8.00

9.00 – 10.30	RN/RS Session	
11.00 – 12.30	Semi-plenaries 2.1 – 2.6	Workshop Education
12.30 – 13.30	Lunch / Meet the author session	
13.30 – 15.00	RN/RS Session	
15.15 – 17.00	Special Meet the Author Session: Gender meets Sociology	
17.00 – 19.30	ESA General Assembly	
19.30 – 24.00	CONGRESS PARTY	

ESA PhD WORKSHOP

will be held at the University of Geneva, Uni-Mail, on the 5th and the 6th of September. More information is available on our website.

CONGRESS OF THE SWISS SOCIOLOGICAL ASSOCIATION (SSA): SWITZERLAND IN TURBULENT TIMES

will take place at the University of Geneva, Uni Bastions, 6th of September from 14.00 to 18.00. More information under www.sagw.ch

Saturday 10th of September

Registration opens at 8.00

9.00 – 10.30	RN/RS Session	
11.00 – 12.30	RN/RS Session	ESA Past President (closed meeting)
12.30 – 13.30	Lunch / Meet the author session	
13.30 – 15.00	RN/RS Session	
15.30 – 17.00	RN/RS Session	
17.00 – 19.30	CLOSING PLENARY / CEREMONY: The Future of Capitalism	



University of Geneva, Uni-Mail, photographé: Jacques ERARD, 2004

Social Relations in Turbulent Times

Geneva, 7-10 Sept. 2011

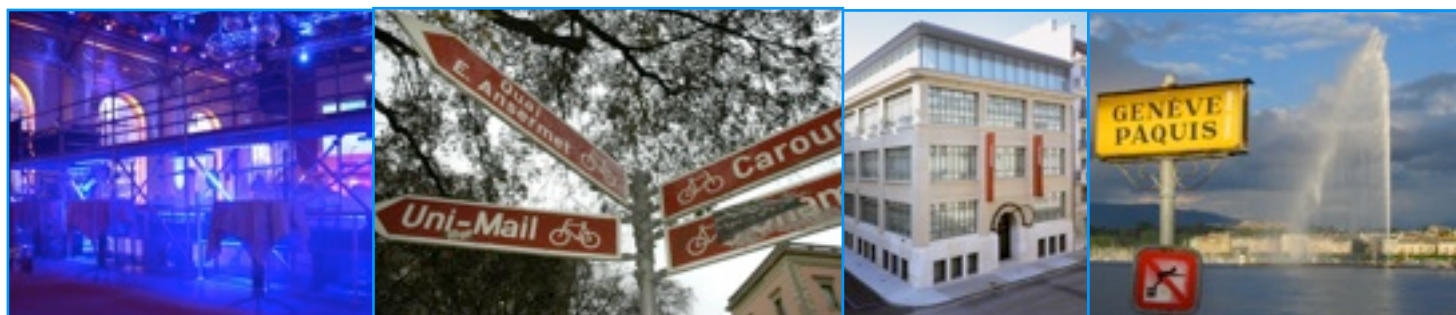
ESA 10th Conference

RN/RS CONFIRMED FOR ESA 10TH CONFERENCE

Please have a look on our website to see which RN and RS accept French proposals and presentations
www.esa10thconference.com/submission.php

RN01 Ageing in Europe
RN02 Sociology of The Arts
RN03 Biographical Perspectives on European Societies
RN04 Sociology of Children and Childhood
RN05 Sociology of Consumption
RN06 Critical Political Economy
RN07 Sociology of Culture
RN08 Disaster and Social Crisis
RN09 Economic Sociology
RN10 Sociology of Education
RN11 Sociology of Emotions
RN12 Environment and Society
RN13 Sociology of Families and Intimate Lives
RN14 Gender Relations in the Labour Market and the Welfare State
RN16 Sociology of Health and Illness
RN17 Industrial Relations, Labour Market Institutions and Employment
RN18 Sociology of Communications and Media Research
RN19 Sociology of Professions
RN20 Qualitative Methods
RN22 Sociology of Risk and Uncertainty
RN23 Sexuality
RN24 Science and Technology
RN25 Social Movements
RN26 Sociology of Social Policy and Social Welfare
RN27 Southern European Societies
RN28 Society and Sports
RN29 Social Theory
RN30 Youth and Generation
RN31 Ethnic Relations, Racism, Antisemitism

RN32 Political Sociology
RN33 Women's and Gender Studies
RN34 Sociology of Religions
RN35 Sociology of Migration
RS01 Sociology of Disability
RS02 Dynamics and Complexity of Minority Statuses in Plural Societies
RS03 East and West in Europe : Two Decades of Transformations
RS06 Maritime Sociology
RS07 Arts, Culture and Public Memory
RS10 Socio-Anthropological Approaches to Transnational Migrations
RS14 Regional Conflicts
RS15 Rethinking Inheritance of Inequalities
RS17 Sociology of Celebration
RS18 Economic Elites in Turbulent Times
RS19 The Tacit-Knowing Approach
RS20 Culture, Politics and Conflicts
RS21 RENCORE : Methods for Comparative Research on Europe
RS22 European National and Regional Identities
RS23 Bringing Lefebvre Sociology Back in Urban Studies
RS24 The Sustainable City and the Arts
RS25 Evolution an Sociology
RS26 Global and Transnational Sociology
RS27 Russian Sociology in Time, Social Space and Transition
RS28 The Relevance of Carl Marx's Theory Today : Does it exist ?
RS29 Arts and Cultural Management



Social Relations in Turbulent Times

Geneva, 7-10 Sept. 2011

ESA 10th Conference

WHAT TO DO IN GENEVA?

Geneva houses over 40 public and private museums, as well as numerous art galleries. The various collections cater for all interests, be it archaeology, ethnography, nature, fine arts, applied arts, science or technology. All other events and more about Geneva can be found under www.geneve-tourisme.ch

FESTIVAL DE LA BÂTIE: THEATRE – MUSIC – DANCE – PERFORMANCE

During your stay a very famous international theatre-dance and music festival is taking place. You'll be able to find more details about this event on their website: www.batie.ch



RESTAURANTS

There is a wide choice of restaurants available in Geneva and great places for eating out to suit all budgets. We will soon publish a restaurant list on our website to facilitate your choice. In the meantime you can check www.worldtravelguide.net or www.tripadvisor.com, which are two interesting websites about Geneva's restaurants and more. Please note: restaurants in Geneva must display their menus outside. Take advantage of this and have a look before entering. VAT and tips are included in the prices.

PLAINPALAIS FLEA MARKET

Every Wednesday and Saturday, shoppers comb the flea market in Geneva's Plainpalais district. Stalls are piled high with bric-a-brac, vintage clothes, records, books and occasionally genuine antiques. There are many bargains to be had, and souvenirs too.

EVENTS AROUND THE CONFERENCE: TOUR PROPOSALS

3 different kind of tours will be organized to change your mind. **WHEN? THURSDAY and FRIDAY in the afternoon.** Exact time has to be scheduled. Please indicate during the **REGISTRATION PROCESS** if you want to participate at one of the **TOURS**.

01 GENEVA INTERNATIONAL

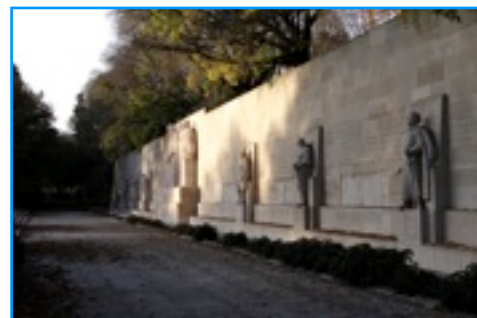


A walking tour within the international organisation quarter of Geneva. You will see and hear about several of the most renowned organisations and have the opportunity to visit the United Nations Geneva Headquarters building.

02 GENEVA AND THE REFORMATION

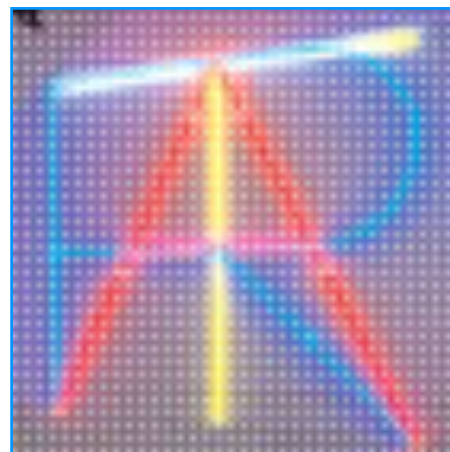
1535 heralded the triumph of the Reformation, and Geneva assumed the political status of a republic. Calvin settled here in 1536; and under his guiding spirit the republic was elevated to rank of Mother of the Protestant Church. From 1550 onward a host of Protestants, mainly French and Italian people fleeing persecution in their

countries of birth, poured in to establish Geneva as a beacon of faith and learning under the auspices of Calvin and Théodore de Bèze: the Academy, forerunner of the present University, was founded in 1559.



The refugees also helped restore economy, which had been in recession ever since the decline of the trade fairs at the end of the previous century. This walking tour will guide you through important places of the reformation.

03 URBAN AND CONTEMPORARY GENEVA



This walking tour will guide you through Geneva's artistic and cultural highlights. On the provisional programme the «Usine», alternative cultural center, and the «MAMCO», which is the most important Museum of contemporary art in Geneva, well known abroad. Opened in September 1994 in a former factory, Mamco takes into account the spirit of the building it occupies. The museum exhibits a broad range of works dating from the early 1960s to the present day.

Social Relations in Turbulent Times

Geneva, 7-10 Sept. 2011

ESA 10th Conference

In a convivial and playful manner inspired by Marcel Duchamp, Mamco aims to provoke people to reconsider their understanding of the notions of «contemporary art» and «museum». Three times a year, the Museum presents a new stage of its on-going construction with temporary exhibitions and new presentations of its collection. More: www.mamco.ch

GENERAL INFORMATION

You can find all newest information on our website: www.esa10thconference.com Please check regularly to get updated and see the latest information. Be aware that you must collect and wear your **badge for all Congress events**, also for the Welcome Reception at Victoria Hall. You can collect your badge in the main hall of Uni-Mail.

REGISTRATION

Fees are published on our website. Registration will open 1st of March. Deadline for early-bird is the 3rd of May.

REGISTRATION INCLUDES:

Participation in Scientific Sessions badge, congress bag, final programme, abstract CD (in bag), Opening ceremony and aperitif and closing ceremony.

ACCOMMODATION

During Registration you directly can choose to book one of the pre-reserved rooms. You also can choose to book a hotel independently using the [links](#) and the lists provided on our website.

CONGRESS PARTY

Friday evening, we're pleased to welcome you at our Congress Party at Uni-Mail. Please indicate during registration if you intend to come. Participation will only cost CHF 10.- in which a drink is included. Preparation of

the evening is still in process, you'll know more about in the next newsletter. **Don't forget to register your participation for one of the proposed TOURS!!!**

VISA PURPOSE

You may request a visa invitation letter from our Logistic Conference Organizer as part of the on-line registration system – just click on the box and answer the questions that appear. Visa invitation letters cannot be provided until you have registered for the congress.

FUNDING

Unfortunately, no funding can be provided for traveling and hotel accommodation from the LOC Committee. Please enquire with your University who may be able to support you.

ABSTRACT BOOK AND FINAL PAPERS

There will be an **abstract CD, but no book**. Once your abstract has been accepted, coordinators will tell you if they need the final papers or not. Further guidelines (poster, distributed papers) will be published in time on our website.

CONFERENCE VENUE AND CONTACTS

UNI Mail, Boulevard du Pont d'Arve 40, 1205 Geneva, Switzerland.

www.unige.ch

Local Organization Geneva

Sandro Cattacin: President of LOC, and Patricia Naegeli, University of Geneva, Department of Sociology
Phone: ++41 22 379 88 55
info@esa10thconference.com

Logistic Conference Manager

MCI Suisse SA, 75, rue de Lyon, P.O. Box 500, 1211 Geneva, Switzerland
Phone: ++41 22 33 99 667
esa2011@mci-group.com

SUPPORTING OF THE CONFERENCE

To date, the Congress is supported by: The Department of Sociology, the Dean of the Faculty of Economic and Social Sciences and the Rectorat of the University of Geneva, the Swiss Sociological Association, the City and the Canton of Geneva. If you are interested in sponsoring ESA 2011, please contact sandro.cattacin@esa10thconference.com

BECOME AN ESA MEMBER BEFORE YOUR CONGRESS REGISTRATION.

To do that, please subscribe to www.europeansociology.org

WEDNESDAY 7th			
9h - 12h	12h - 14h	14h - 17h	17h - 19h
ESA Dinner Conference Meeting	Commit of R's Exposition/Workshop Meeting	Commit of Soc Workshop Meeting	Opening Ceremony & Opening Plenary "Social Europe Under Pressure" V.B.
	1st plenary meeting 18h30		

